

Life's hustle and bustle—office, traffic, school, daily chores—can be exhausting at times. We are constantly looking for ways to unwind and replenish ourselves, often outside of our homes. The search for the true sense of wellness is never-ending. Wellness that can calm our mind, body, and soul all day, every day.

However, your quest for wellness no longer has to take you away from home. FO2 introduces a novel approach to wellness living: homes that allow you to truly relax.

FO's naturally beautiful homes are situated near the Oxygen Park's 65000 trees so that you find your true sense of wellness.

**Feel The Nature**





## IT'S NATURALLY BEAUTIFUL

Situated near a 36,400 sq metre Oxygen Park where more than 65,000 trees of 65 native varieties are planted through the Miyawaki method, FO feels naturally beautiful, from within and out.



# YOUR GRAND ENTRANCE, POWERED BY NATURE

FO<sub>2</sub> welcomes you with a grand elegant entrance that's surrounded by the fresh air produced by over 65,000 trees. Entering your home like this won't make the best time of your day, naturally?



Large Entrance Gate





## CELEBRATE LIFE, NATURALLY

After that grand entrance at the gate, another element of nature stands ready to welcome you with a rhythmic sound of the water flow.



Attractive Society Entrance  
With Water Body



24 Hrs CCTV  
Surveillance



Well Equipped  
Security Cabin



24 Hrs Security.





## STAND OUT, NATURALLY

Located off Ognaj-Gota Road, FO<sub>2</sub> offers you a tranquil setting in a 13-storey building with aesthetically appealing structure to help you stand out.







**LIFE OF  
YOUR DREAMS,  
AMIDST NATURE**

When you move into FO<sub>2</sub>, you are welcomed by the abundance of trees and pure air. Everything you need for a healthy life is right there. So come home to FO<sub>2</sub> and discover how it feels like to live in nature.



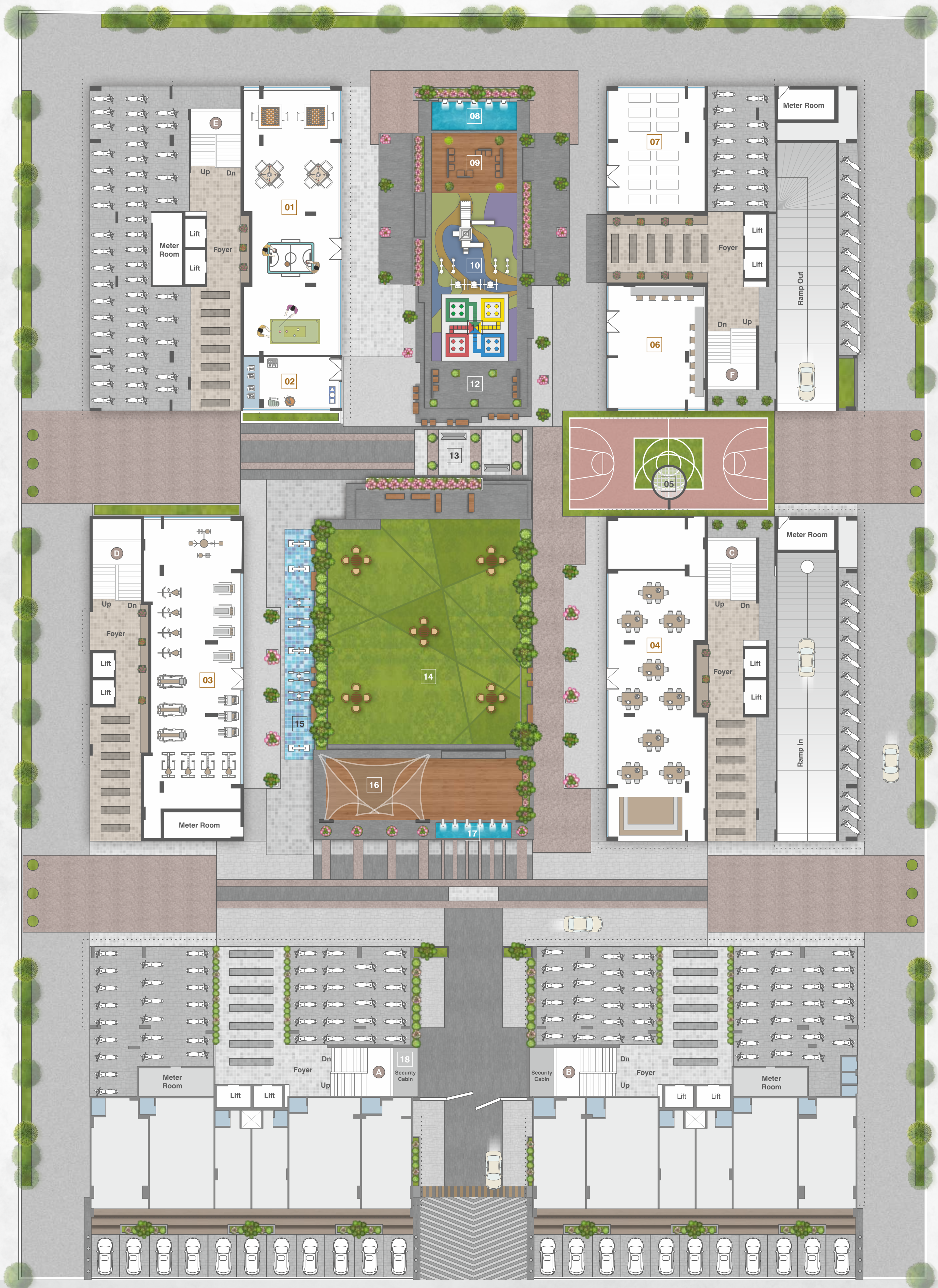
LAYOUT PASTING





# GROUND FLOOR LAYOUT

- 01 Indoor Game
- 02 Toddlers Play
- 03 Gymnasium
- 04 Multipurpose Hall With Kitchen Pantry
- 05 basketball Court
- 06 Library
- 07 Yoga Room



W I D E R O A D



# 35+ Amenities

A large graphic featuring the text '35+ Amenities' in white on a dark blue background. The number '35' is significantly larger than the '+ Amenities'. Various colorful illustrations are integrated with the text: two children in inflatable rings in a pool, a couple at a dining table, a playground with slides, a person with a basketball, a person at a gym, a person in a yoga pose, an elderly man reading on a bench, and a person on a stationary bike.

## THE PERFECT DAY WITH 35+ AMENITIES

Start your morning as you walk amidst the landscaped garden, take a dip in the pool if you want to or just spend some minutes at the yoga/meditation deck to prepare for the day. Get your car charged and drive through the wide roadways to your workspace or just use the WFH space at FO2. After you've finished the last mail of your day, come home and be welcomed by the fresh air and then, gather your friends to gossip about the world while sitting in the gazebo. And if you feel like making most of your day, come to the clubhouse and play the game you like. And if you're still not done, come to the library and grab a book while your kids play in the children play area.





**DECORATIVE ENTRANCE FOYER**  
MAKE EVERY ENTRANCE A GRAND ONE



**INDOOR GAME ROOM**  
FOR THE FUN TIMES WITH YOUR FRIENDS



**TODDLERS PLAY AREA**  
LET THEM PLAY WHILE YOU RELAX



**MULTIPURPOSE BANQUET HALL**  
FOR YOUR HAPPY FUNCTIONS



**MINI BASKETBALL COURT & MULTIPURPOSE PLAY COURT**  
FOR THE INNER CHILD IN YOU



**LIBRARY**  
'CAUSE THE ONES THAT READ, LEAD



**LADIES SITTING**  
YOUR TAGLINE GOES HERE



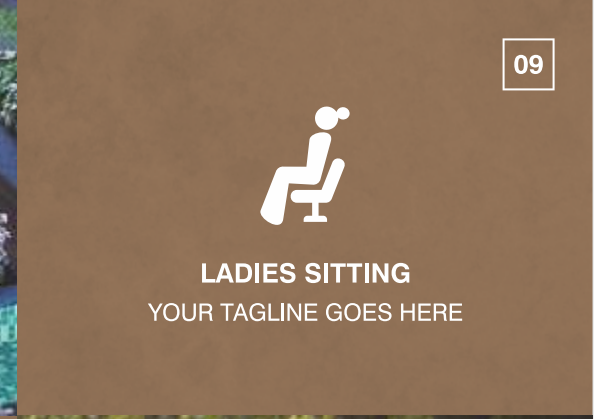
**YOGA AND MEDITATION ROOM**  
CHANT OM & TRANSFORM



**SPLASH POOL FOR CHILDREN**  
YOUR TAGLINE GOES HERE



**SENIOR CITIZEN SITTING AREA**  
YOUR TAGLINE GOES HERE



**LUDO RUBBER FLOOR PLAY AREA**  
TAGLINE GOES HERE



**CHILDREN PLAY AREA**  
MORE PLAY, MORE YAY



**LANDSCAPE GARDEN**  
TAGLINE GOES HERE



**ZULLA SITTING**  
TAGLINE GOES HERE



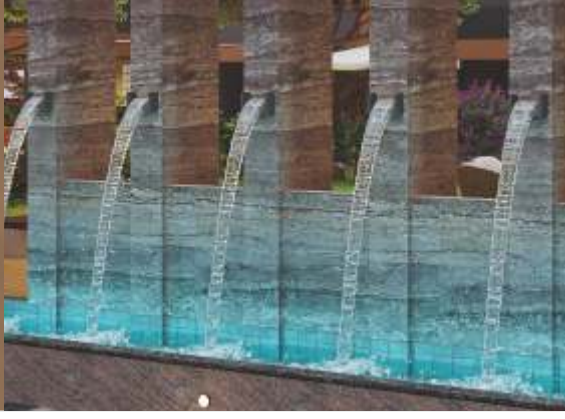
**ENTRANCE WITH WATER BODY**  
TAGLINE GOES HERE



**ATTRACTIVE GAZEBO**  
SIT OUT PLAZA  
TAGLINE GOES HERE



**OUTDOOR GYM**  
TAGLINE GOES HERE



**SECURITY CABIN**  
TAGLINE GOES HERE





## GET FIT, NATURALLY

While the fresh air keeps your skin and body healthy inside out, the gym and yoga/meditation deck will bring the energy you need to keep yourself fit and fine.



Gym With Fitness Equipment





## A PLACE WHERE PLAY COMES TO YOU, NATURALLY

With an abundance of indoor and outdoor play areas, the young ones and the ones young at heart will be allured to play with their hearts, minds and souls, naturally.



Excellent cross ventilation



Natural Light Source



Play Area With Rubber Flooring







## REFLECT THE TRANQUILITY OF NATURE

When you live around nature, see the soothing greens, smell fresh air, your mind, body and soul automatically start to calm down and reflect the same tranquility as nature does to you.







## WHAT HAPPENS WHEN YOU LIVE CLOSE TO NATURE

When you have access to green spaces, you soak in sun vitamins, which strengthens the immune system, increases your oxygen intake and thus, increases your energy, memory and mood levels. Physical exercises in natural settings produce an elevated sense of well-being and endorphin release that gym workouts cannot match.



## SPECIAL FEATURES



All Towers Have 2 Passenger Lift



24 Hrs Water Supply With Private Borewell



Two (2) Allotted Car Parking.



Two-Wheeler Parking.



Electrical Meter Room



Car Wash Area



Common Toilet



Adani Gas Line

- EV Charging Point
- Society Admin Office
- Handicap Ramp
- Fire Safety
- 24hrs Power Backup For Common Facility
- Pickup / Drop Off Zone
- Roof Top Solar Panel For Common Light
- Public Utility Store Room

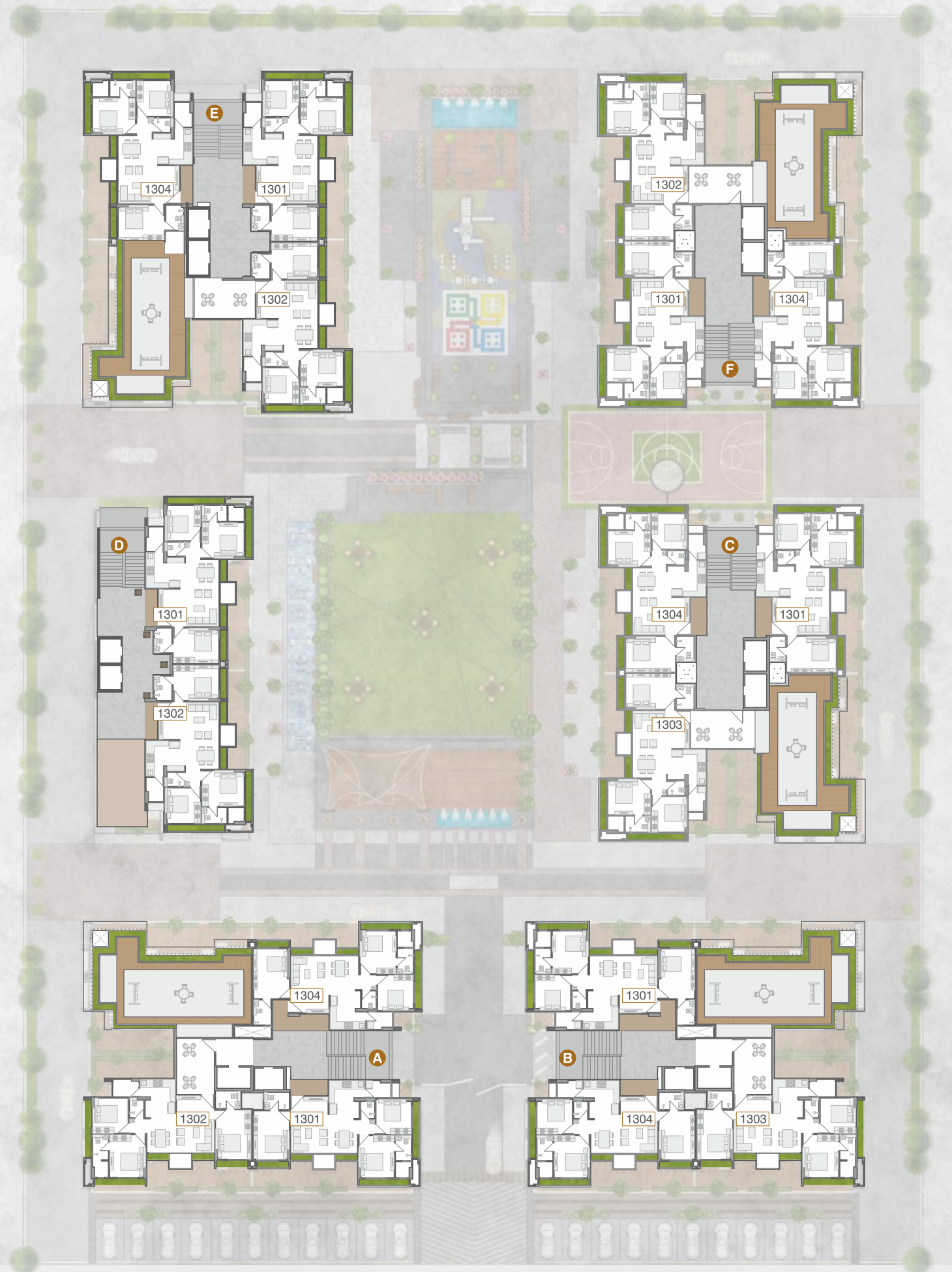


2nd to 12th  
FLOOR LAYOUT



W I D E R O A D

13th  
FLOOR LAYOUT



W I D E R O A D





**FIRST FLOOR PLAN**





**TYPE A**  
TOWER A-B-C-F  
TYPICAL FLOOR PLAN



**TYPE B**  
TOWER D-E  
TYPICAL FLOOR PLAN





## SPECIFICATION

### STRUCTURE

Earthquake resistant designed & Consultant

### WALL

Inside wall mala finish plaster and outside wall double coat Sand face plaster.

### FLOORINGS

vitrified tiles flooring far all rooms & utility area. China mosaic in terrace to resist heat & water proofing treatment in terrace.

### KITCHEN

Granite platform glazed tiles cladding up to lintel level, adequate light paints for kitchen appliances and stainless steel sink of good quality.

### DOORS & WINDOWS

Decorative wooden door for main entrance & wooden Flush door with marble frames far other. Aluminum sliding windows in all rooms.

### ELECTRICAL

Concealed electric wiring with adequate electric points in all area. ISI modular electrical accessories of standard quality. ISI copper wire of standard distribution hoard with miniature circuit breakers to ensure safety.

### BATHROOM

Digital Glazed tiles flooring & up to Lintel level. "CERA" are equivalent fitting for bath, corrosion leak-proof pipe & fittings. (CPVC & UPVC), "JAGUAR" or equivalent SS fittings.

### PAINTS

All exterior walls with acrylic paints & interior all with putty finish.

**Jaquar**  
GROUP

**Schindler**

**ASTRAL**  
PIPES

**HULIOT**

**CERA**

**JOTUN**

**Godrej**

**Finolex**  
Cables Limited

**Schneider**  
Electric

**Schindler**

**UltraTech**  
CEMENT  
The Engineer's Choice

**RR** KÄLL

**ANCHOR**

**ap**  
asianpaints

**KONE**





# LOWER BASEMENT



# UPPER BASEMENT

