



*Reaching the pinnacle of luxury
and comfort in lifestyle!*

A HOLISTIC LIFE WITH LUXURY AND LEISURE...

A. SHRIDHAR GROUP ensures that their residents could embrace the best of luxurious elements that could elevate their lifestyle. Blending the traditional courtyard with the modern elevation, ANANTARA ALPINES marries the best of both past and present to guarantee a brilliant future for its residents.

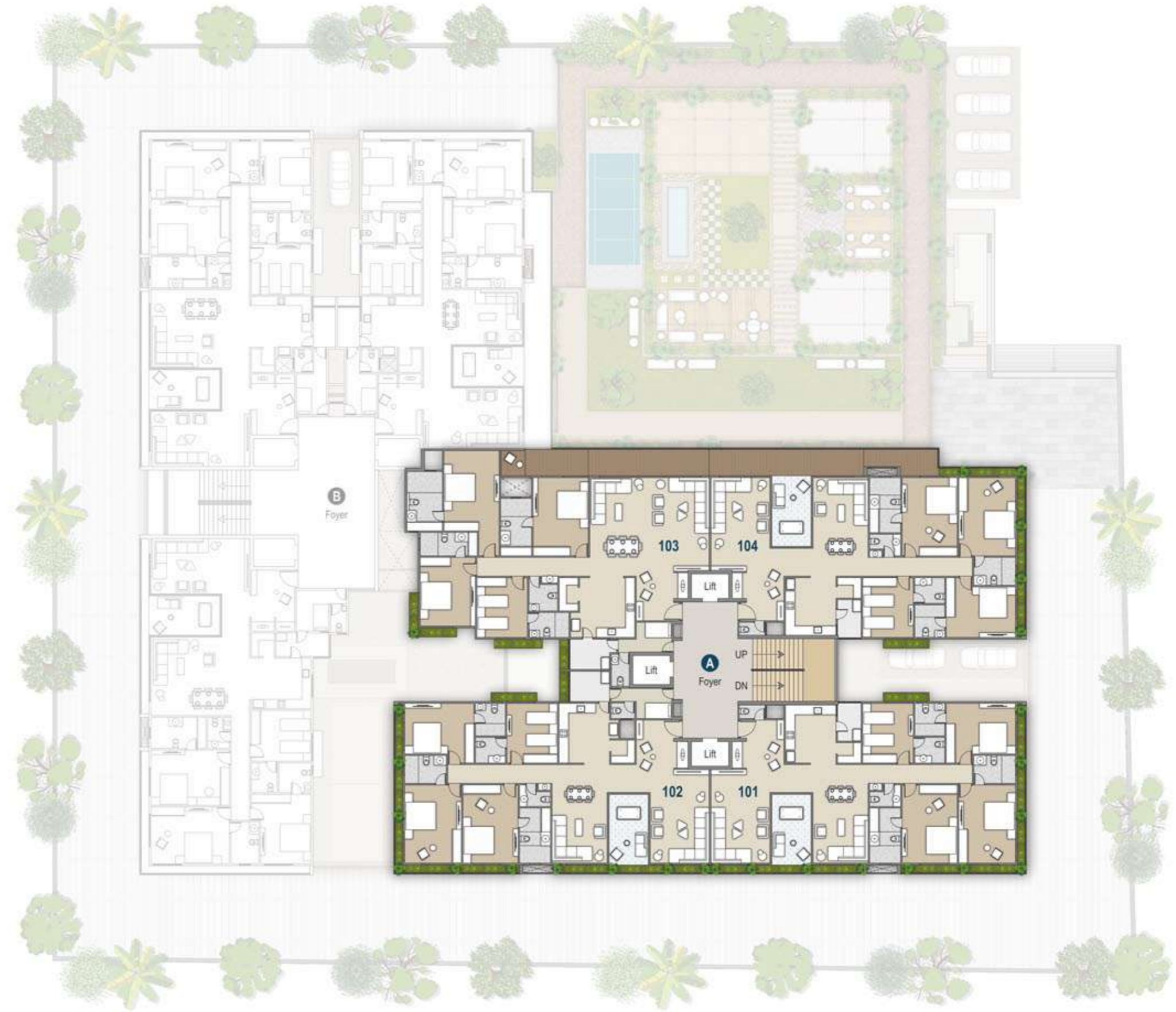
PREMIUM
LIVING SPACES FOR

70

CLOSE-KNIT
FAMILIES



TYPICAL FLOOR PLAN



GROUND FLOOR PLAN





UNIQUENESS IN
EVERY CREATION!



70 distinct
Apartments



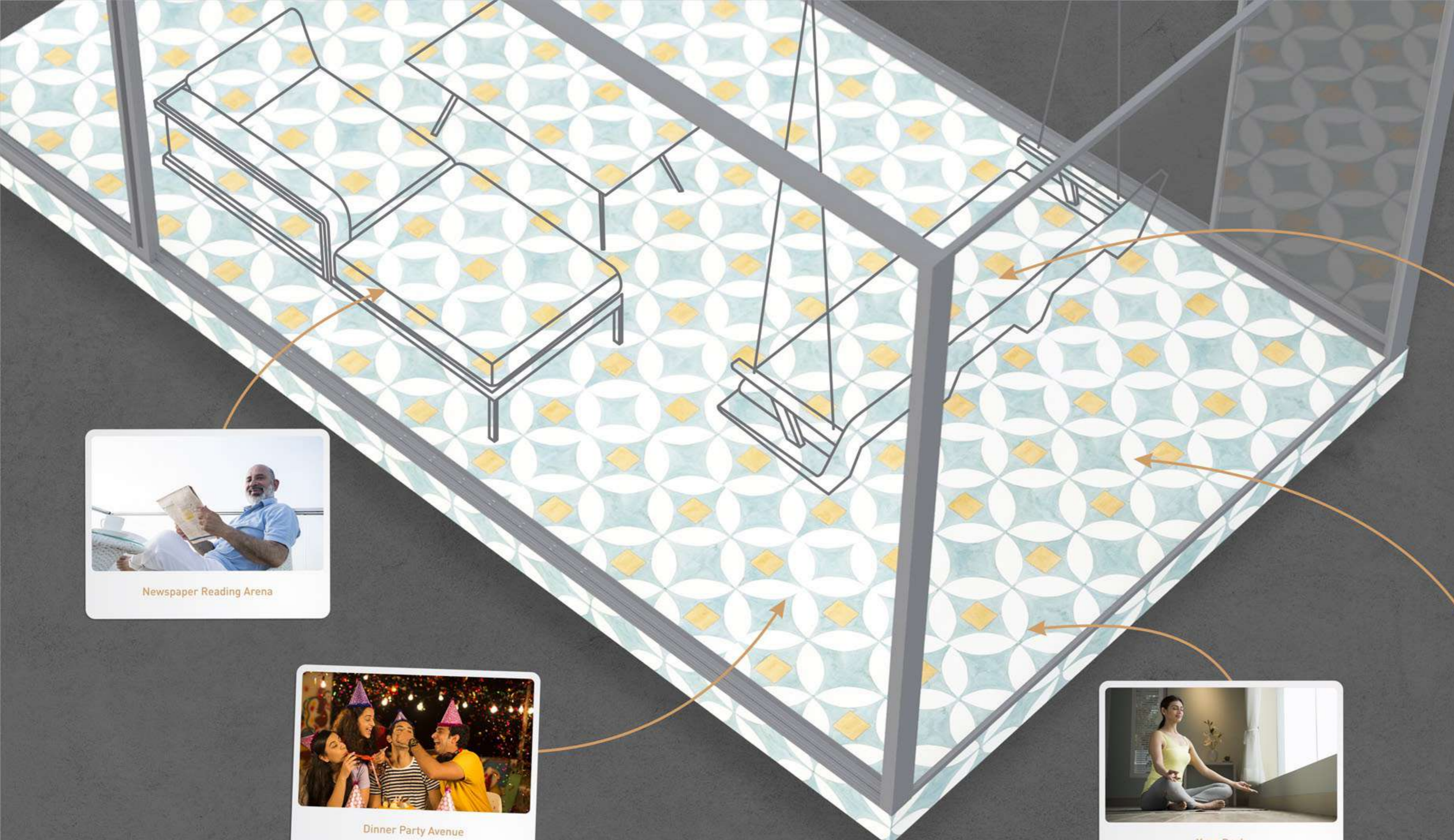
Vastu
Compliant



Centralize Irrigation
systems for Balcony
Plantation

EMBRACE YOUR ENVIRONS,
INSIDE YOUR LAVISH ABODE!

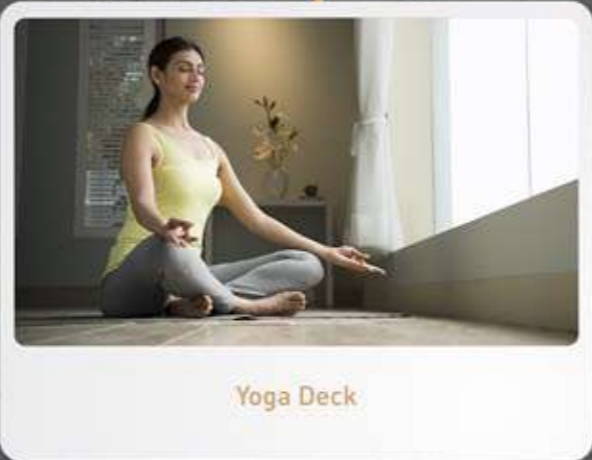




Newspaper Reading Arena



Dinner Party Avenue



Yoga Deck



Coffee Space



Swings 'n Slides

EVERYTHING FOR EVERYONE!

ANANTARA ALPINES residents can choose their elite apartments from the multiple options available to fulfil their needs and requirements.



OPTIONS OF CHOOSING

- Courtyard with separate living & family spaces
- Balconies with living and master bedroom
- An apartment without a courtyard - providing an Ultra lavish king size living room





THE PANORAMIC VIEW
THAT APPEARS WIDER THAN EVER!





EMBRACING YOUR DREAMS; RIGHT FROM THE ENTRANCE!

With a beautiful vestibule that welcomes visitors without affecting your privacy, every abode at ANANTARA ALPINES presents a grand entrance marked by homely and spiritual vibes.

- Separate entry to servant room with direct access to kitchen & wash yard
- Separate elevators for house-helps and goods



A grand
welcoming
vestibule



Dedicated
puja space

AN EXPANSIVE LIVING SPACE
THAT MEETS YOUR NEEDS!

Residents who are not keen to have an open courtyard, can choose the limited edition apartments that utilize the space into living and family room, extended with a spacious balcony.

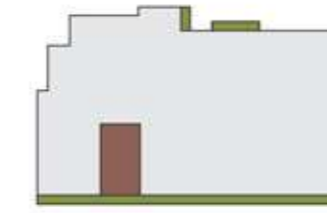


A BEDROOM THAT
MARRIES COSINESS WITH GLAMOUR!

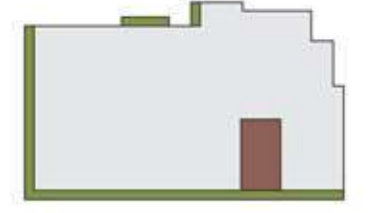
Every bedroom at ANANTARA ALPINES is blessed with natural light and ventilation for its residents, while ensuring the space itself is grander than ever.



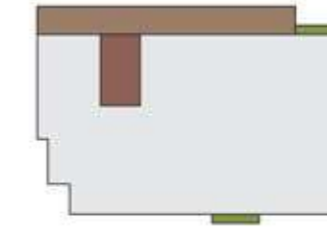
UNIT PLAN BLOCK A
WITH COURTYARD



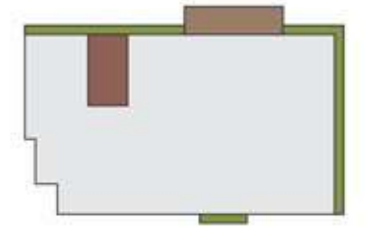
BLOCK - A | 101 - 1001
COURTYARD - 8'6" x 15'4"



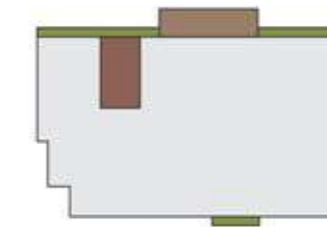
BLOCK - A | 102 - 1002
COURTYARD - 8'6" x 15'4"



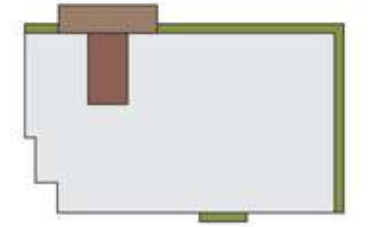
BLOCK - A | 104
COURTYARD - 8'6" x 15'4"
DECK - 204 SQ. FT.



BLOCK - A | 204 | 504 | 804
COURTYARD - 8'6" x 15'4"
BALCONY - 15'9" x 6'0"

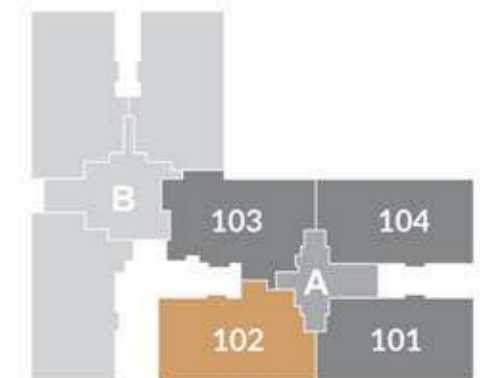


BLOCK - A | 304 | 604 | 904
COURTYARD - 8'6" x 15'4"
BALCONY - 15'9" x 6'0"

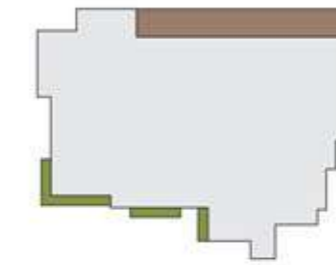


BLOCK - A | 404 | 704 | 1004
COURTYARD - 8'6" x 15'4"
BALCONY - 15'9" x 6'0"

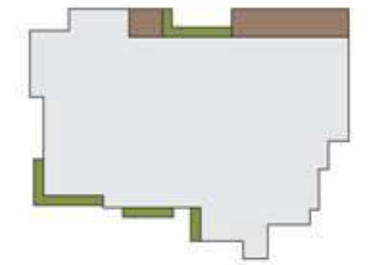
- UNIT SPACE
- BALCONY
- COURTYARD
- GREEN SPACE



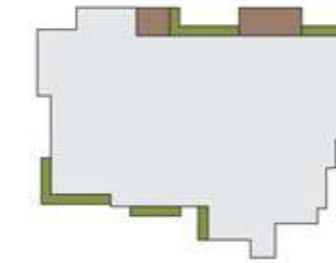
UNIT PLAN BLOCK A
WITHOUT COURTYARD



BLOCK - A | 103
DECK - 5'2" x 5'6" | 89 Sq. Ft
6'0" x 25'2"

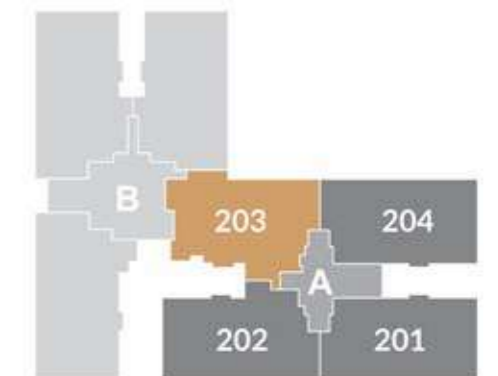


BLOCK - A | 203 | 503 | 803
BALCONY - 5'2" x 5'6" | 6'0" x 24'6"

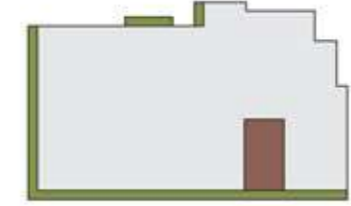


BLOCK - A | 303 | 403 | 603
703 | 903 | 1003
BALCONY - 5'2" x 5'6" | 6'0" x 15'9"

- UNIT SPACE
- BALCONY
- GREEN SPACE



UNIT PLAN BLOCK B
WITH COURTYARD

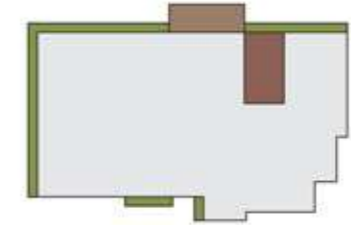


BLOCK - B | 101 - 1001
COURTYARD - 8'6" x 15'4"

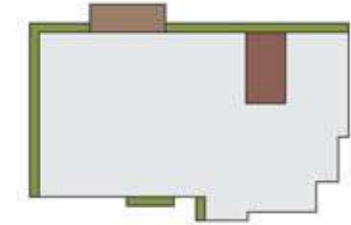


BLOCK - B | 102
COURTYARD - 8'6" x 15'4"

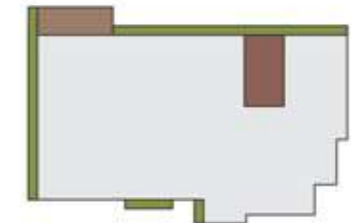
BALCONY - 238 SQ. FT.



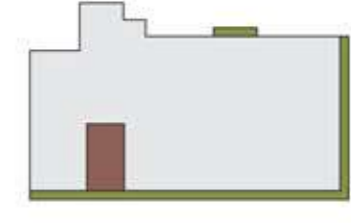
BLOCK - B | 202 - 502 - 802
COURTYARD - 8'6" x 15'4"
BALCONY - 15'9" x 5'9"



BLOCK - B | 302 - 602 - 902
COURTYARD - 8'6" x 15'4"
BALCONY - 15'9" x 5'9"

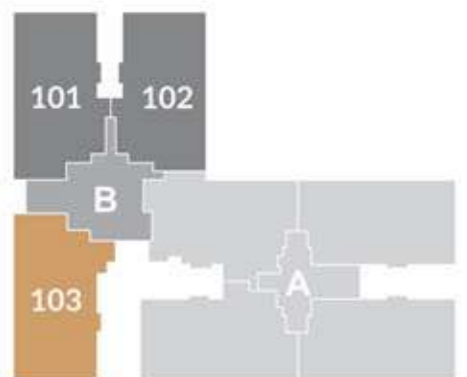


BLOCK - B | 402 - 702 - 1002
COURTYARD - 8'6" x 15'4"
BALCONY - 14'1" x 5'9"



BLOCK - B | 103 - 1003
COURTYARD - 8'6" x 15'4"

- UNIT SPACE
- BALCONY
- COURTYARD
- GREEN SPACE







20'
DOUBLE HEIGHT FOYER
for an ultra lavish entrance

THE GRAND FOYER THAT GREET'S WITH CLASS!



THE HOMELY SEATS AMIDST
SYLVAN SURROUNDINGS!



EMBRACE THE GREENS IN DIVINE TRANQUILLITY!

With a calming temple and the divine Jain Derasar within the premises, ANANTARA ALPINES presents a spiritual zone for residents to meditate and relax their senses in solitude.



- Jain Derasar
- Divine Temple
- Meditation Arena
- Landscaped Gardens
- Aqua Fountain





OPEN TO ECSTASY IN
VERDANT, VIBRANT LAWNS!



Lush Green
Garden



Swing
Park



Outdoor
Play Area



REVEL IN THE PARTY LOUNGE; AS MOMENTS
AND MODERNITY BLEND IN YOUR LIVES!

TOUCHING THE SKYLINE;
COMPLETING YOUR LIVES!

